



 smith&nephew  
**SYNERGY<sup>®</sup>**  
Hip System

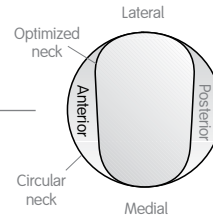
Reaching new heights  
Comprehensive. Efficient. Simple.



# SYNERGY<sup>◇</sup> Porous Coated Stem

It's easy to understand why SYNERGY Hip System is one of orthopaedics' great success stories. Its rapid adoption by surgeons has been due to the system's significant advances over previous tapered implants, including its unique stem geometry, choice of surface treatments, innovative neck design, true dual offsets and efficient, easy-to-use instrumentation.

12/14 Smith & Nephew taper allows use of 22, 26, 28, 32 and 36mm metal, ceramic or OXINIUM<sup>®</sup> femoral heads. Proven taper design minimizes potential for corrosion and debris generation.



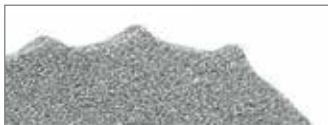
Polished circulo-trapezoidal neck increases range of motion while reducing the risk of dislocation.

Rounded medial curvature matches proximal femoral geometry.



Threaded in-line driving platform provides version control.

0.5mm thick ROUGHCOAT<sup>®</sup> porous (pore size ~200µm) coating allows bone ingrowth.



Proximal geometry available with 50µm hydroxyapatite coating.

Distal fins increase rotational stability.



10 sizes in 1mm increments cover a wide range of patient variability. Sizes come in standard and high offset.

Roughened titanium surface allows bone ongrowth and promotes stability.



Polished distal bullet tip reduces end of stem cortical bone contact.



3° proximal to distal taper increases implant stability. Three point contact (posterior-anterior-posterior) provides immediate rigid fixation.