



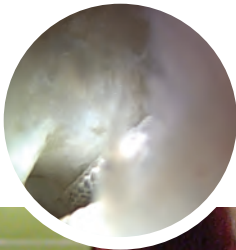
Easy to position
exactly where you want it

 **smith&nephew**
BIORAPTOR[®] 2.3 PK
Suture Anchor

Small-diameter
anchor



Consistent depth
and placement

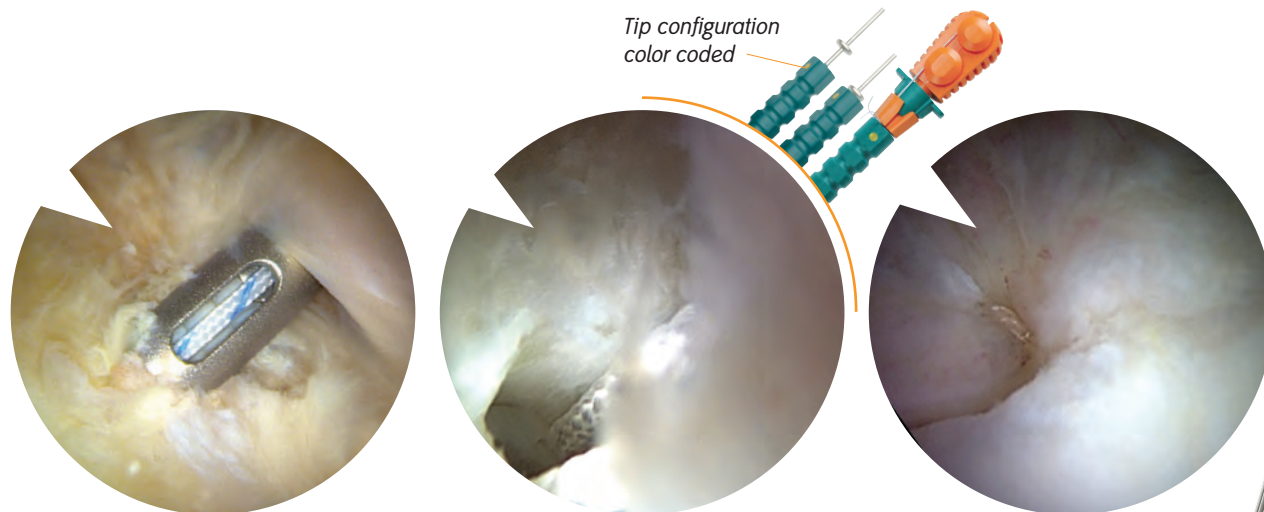


Ease of
maneuverability



Achieve consistent placement using the new easy-to-use BIORAPTOR[◇] 2.3 PK Suture Anchor from Smith & Nephew

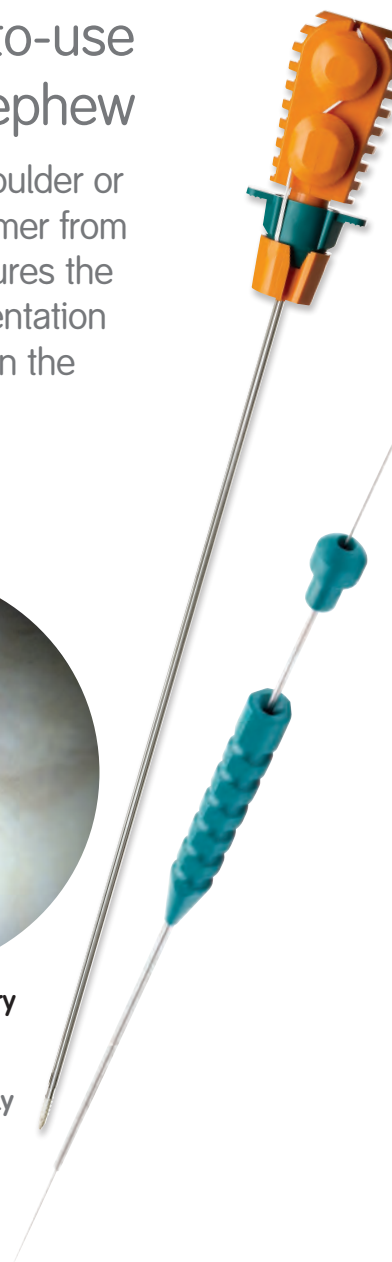
The BIORAPTOR 2.3 PK Suture Anchor is a small-diameter anchor for hip, shoulder or small-joint repairs. Made with radiolucent, high-strength PEEK-OPTIMA[®] polymer from Invibio[®], the anchor includes one preloaded ULTRABRAID[◇] Suture. It also features the new TWINFIX[◇] style inserter handle with depth stop design. The new instrumentation makes it easy to maneuver to any location inside the joint, so you can position the repair exactly where you want it.



2.3 mm anchor allows more fixation points and easy positioning along the joint surface

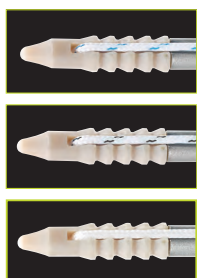
Drill Guide depth stop provides identifiable feedback, ensuring that proper drilling depth and anchor placement are consistently achieved

Easy-to-manuever delivery system and smaller anchors make it easy to position the repair exactly where you want it



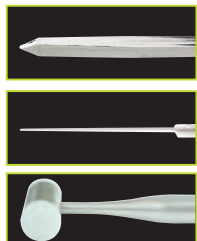
Ordering Information

BIORAPTOR 2.3 PK Suture Anchor



- 72201541 BIORAPTOR 2.3 PK Suture Anchor with one #2 preloaded ULTRABRAID co-braid (blue/white) suture, sterile
- 72201542 BIORAPTOR 2.3 PK Suture Anchor with one #2 preloaded ULTRABRAID co-braid (black/white) suture, sterile
- 72201543 BIORAPTOR 2.3 PK Suture Anchor with one #2 preloaded ULTRABRAID (white) suture, sterile

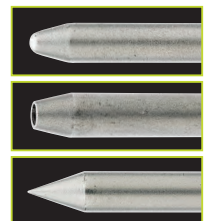
Accessories



- 72201108 2.6 mm Drill Bit with depth stop
- 7205395 Guide Wire, Nitinol, 1.2 mm x 18" (45 cm), package of 3
- 72200867 Mallet with nylon ends
- 72200879 Replacement nylon end caps for mallet, set of 2

Obturers

- 72201106 2.3 mm Inline Obturator, noncannulated
- 72201107 2.3 mm Inline Obturator, cannulated
- 72201112 2.3 mm Inline Obturator, trocar tip



Inline Drill Guides

- 72201105 2.3 mm Inline Drill Guide, fish mouth tip
- 72201110 2.3 mm Inline Drill Guide, spike tip (red dot)
- 72201111 2.3 mm Inline Drill Guide, crown tip (yellow dot)

